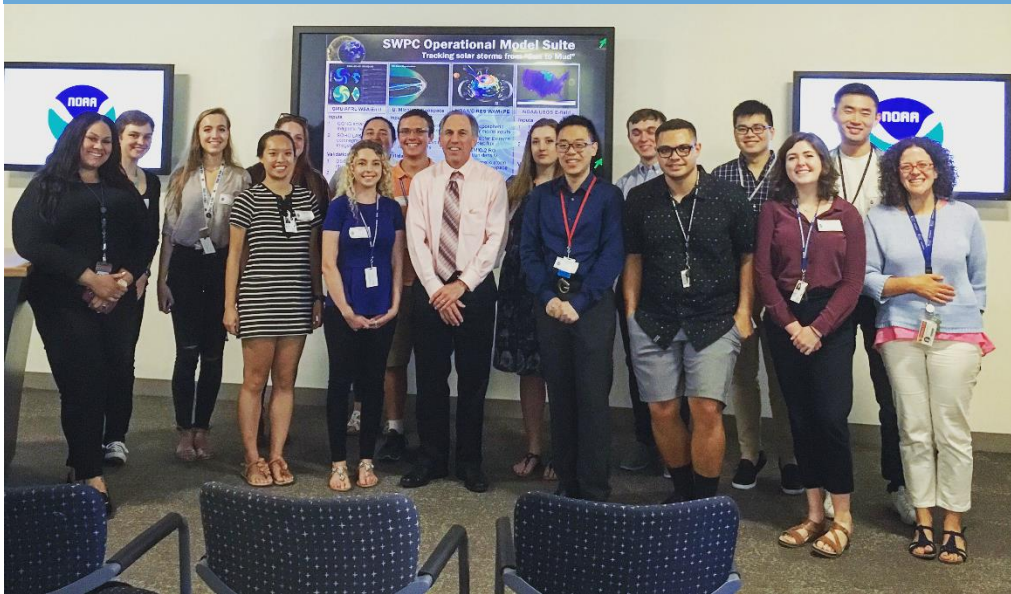


# S.E.S.I. The Scientific and Engineering Student Internship @ NASA Goddard Space Flight Center



Pictured: Our 2017 interns, their peers, Silvana, and Teresa pose with Dr. Bill Lapenta and Ashley Burrell of NOAA's National Centers for Environmental Prediction (NCEP) during an intern exchange between their facility and our students at GSFC.

## Important Dates and Information

**Location:**  
NASA/GSFC in Greenbelt, MD

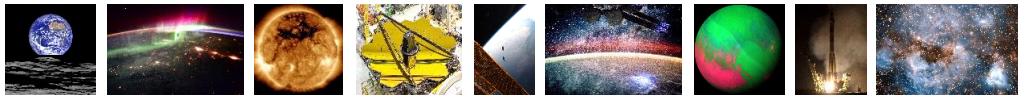
**Internship Types:**  
Science, Engineering, Comp Sci/IT, etc.

**Internship Length:**  
10-12 Weeks, 40 hours per week

**OSSI Application End Date:**  
April 30, 2018

**SESI Program Start Date:**  
June 4, 2018

*A multi-decade program dedicated to training the next generation of scientists, researchers, and engineers.*



## What is SESI?

The Scientific and Engineering Student Internship (SESI) program is a multi-decade, cooperative program between the Physics Department at **The Catholic University of America (CUA)** and the **Heliophysics Science Division** at the NASA Goddard Space Flight Center (GSFC) in Greenbelt, Maryland.

SESI provides qualified and ambitious students with exciting, paid research opportunities and the chance to work alongside mentors (the scientists, engineers, and researchers of GSFC) in the areas of solar and heliospheric physics, data analysis and computational modeling, building space hardware, and many other scientific and computational fields!

In addition to research, students attend weekly lectures from senior scientists, tour Goddard's facilities, and can participate in optional activities in the Washington, D.C. area, such as picnics, park/trail hiking, and museum tours.

## Who should apply?

We accept talented and highly motivated students; SESI strives to offer opportunities to a diverse population of interns who are dedicated to their research and interested in a fun and engaging summer program!

## How do I apply?

Visit NASA's One Stop Shopping Initiative (OSSI) at <https://intern.nasa.gov/ossi/web/public/main/>. You can create an account, search internship opportunities with keyword "SESI," and submit your applications on the OSSI site.

OSSI is currently open to US Citizens. However, other funding and application options may be available to lawful permanent residents and foreign nationals who are interested in SESI, usually at the request of GSFC mentors. Contact Dr. Teresa Nieves-Chinchilla, CEPHEUS Director of Education, at [Teresa.Nieves@nasa.gov](mailto:Teresa.Nieves@nasa.gov) for additional information.

## What NASA missions could I work on?

Some current projects/missions include: Community Coordinated Modeling Center, Deep Space Climate Observatory, Advanced Composition Explorer, Interface Region Imaging Spectrograph, Solar Dynamics Observatory, Magnetospheric Multiscale Mission, sounding rockets, smallsats, and many more!

1. Interns Mike Greklek-McKeon, Anna Voelker, and Evan Frangipane with NASA/GSFC SED Director and Acting Center Director for Science, Dr. Colleen Hartman, after winning the Orbit Award for Science for their submission to the 2016 Intern Poster Session.
2. Silvana (front) and some of our students hike at Great Falls Park.
3. The annual SESI Picnic! (2017)

